

FreeRider[®]
working together

SPARE PARTS MANUAL

Mayfair

FR168-4



U.K. 168-4---BR2GBA2

INDEX

P1 HANDLE BAR ASSEMBLY

P2 FRONT CHASSIS ASSEMBLY

P3 CHASSIS MOULDINGS

P4 REAR CHASSIS ASSEMBLY-DRIVE

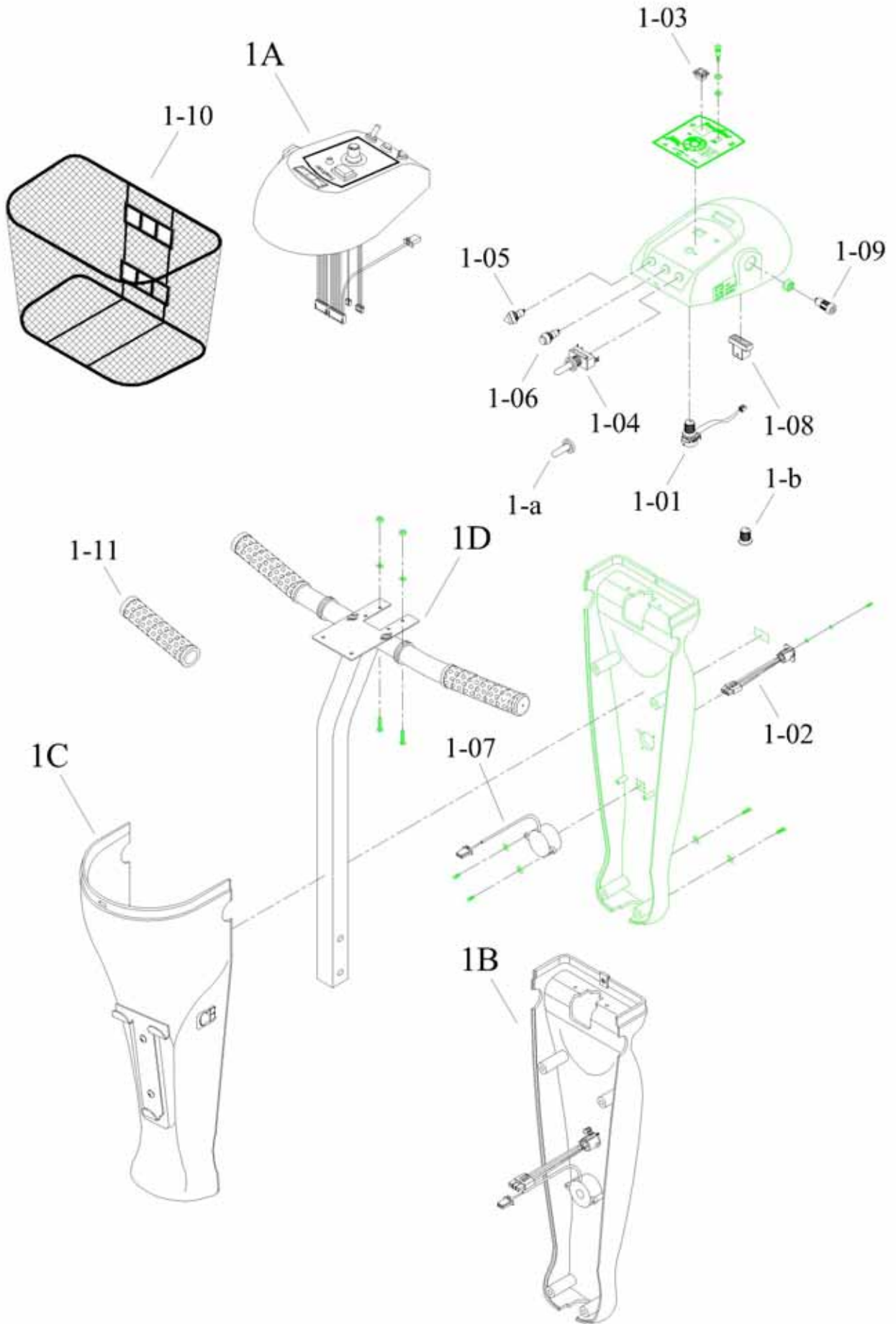
SYSTEM

P5 STEERING

P6 SEAT ASSEMBLY

P7 CONSOLE AND WIRING SYSTEM

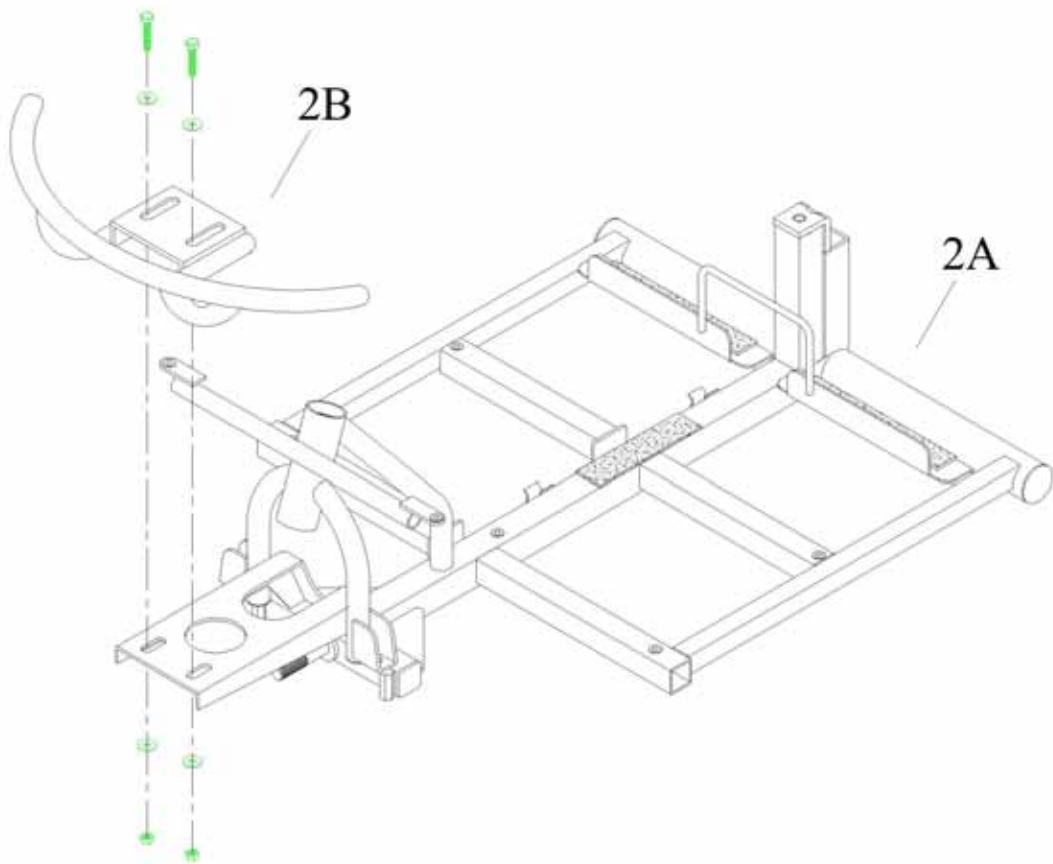
HANDLE BAR ASSEMBLY



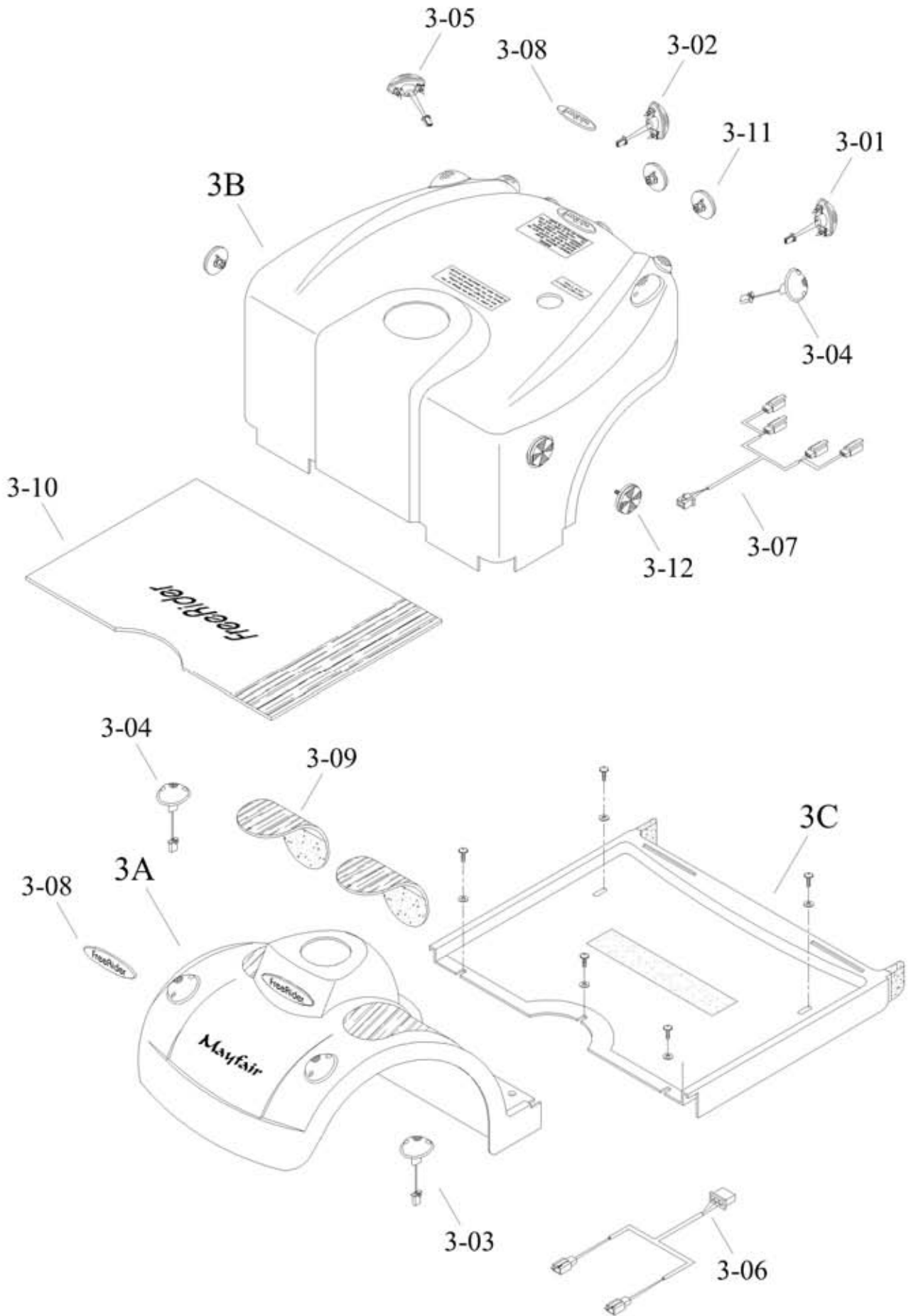
HANDLE BAR ASSEMBLY

DRAWING NO.	PART NO.	PART NAME			
1A	AA01-0100-R1	TOP CONSOLE COVER ASSY.			
1B	AA02-0100-R1	HANDLE BAR COVER REAR ASSY.			
1C	AA03-0400-R1	HANDLE BAR COVER FRONT ASSY.			
1D	PA01-A300	HANDLE BAR ASSY.			
1-01	PAE1-0100-MO	VARIABLE RESISTOR 20KVR ASSY.			
1-02	PAE1-0405-NP	CHARGE SOCKET ASSY.			
1-03	PAE1-0800	HEADLIGHT SWITCH ASSY.			
1-04	PKE1-0105	INDICATOR SWITCH ASSY.			
1-05	PKE1-0101	WARNING LIGHT SWITCH			
1-06	PKE1-0103	HORN BUTTON			
1-07	PKE1-0603	HORN			
1-08	PKE1-0700	BATTERY METER ASSY.			
1-09	PM01-0100	KEY SWITCH			
1-10	PM90-0100	BASKET			
1-11	PP02-0200-PVC	HAND GRIP (PVC)			
1-a	PP01-0200	INDICATOR SWITCH CAP			
1-b	PP01-0500	SPEED KNOB			

FRONT CHASSIS ASSEMBLY



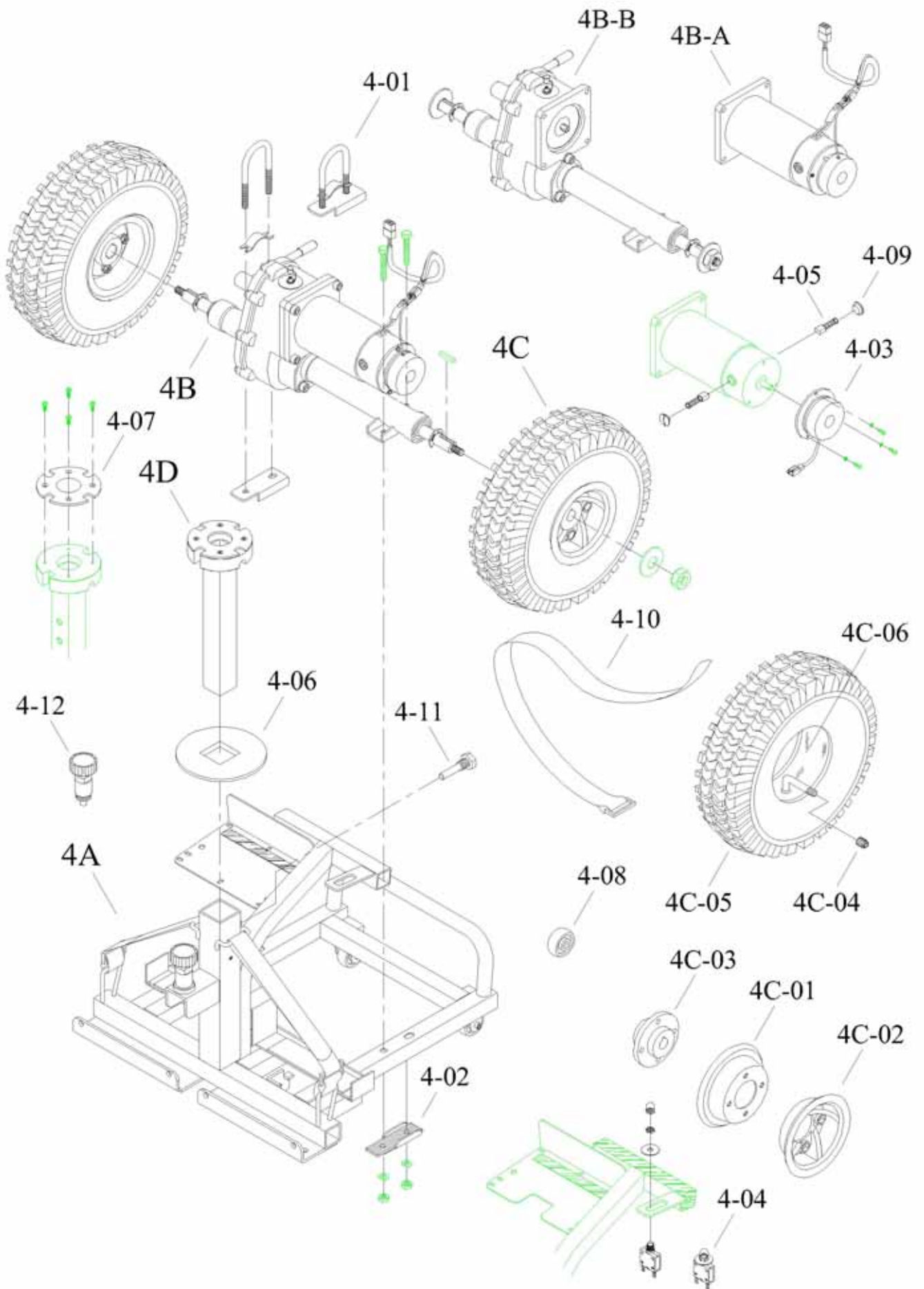
CHASSIS MouldINGS



CHASSIS MOULDINGS

DRAWING NO.	PART NO.	PART NAME			
3A	AA04-1400-R1	FRONT CHASSIS COVER ASSY.			
3B	AA05-1200-R1	REAR CHASSIS COVER ASSY.			
3C	AA06-0100-D1	STAMP COVER ASSY.			
3-01	PAE3-0100-L	TAIL LIGHT LEFT ASSY. (RED)			
3-02	PAE3-0100-R	TAIL LIGHT RIGHT ASSY. (RED)			
3-03	PAE3-0200-L	INDICATOR LIGHT LEFT ASSY.			
3-04	PAE3-0200-L/R	INDICATOR RIGHT (R) / LEFT (F)ASSY.			
3-05	PAE3-0200-R	INDICATOR RIGHT ASSY.			
3-06	PKE3-0400	FRONT INDECATOR CONNECTING WIRE			
3-07	PKE3-0500	REAR INDECATOR CONNECTING WIRE			
3-08	PL00-0100	LABEL "FREERIDER"			
3-09	PP04-0405	CARPET			
3-10	PP04-0504	FLOOR MAT			
3-11	PP05-0400-R	REFLECTOR (RED)			
3-12	PP05-0400-Y	REFLECTOR (YELLOW)			

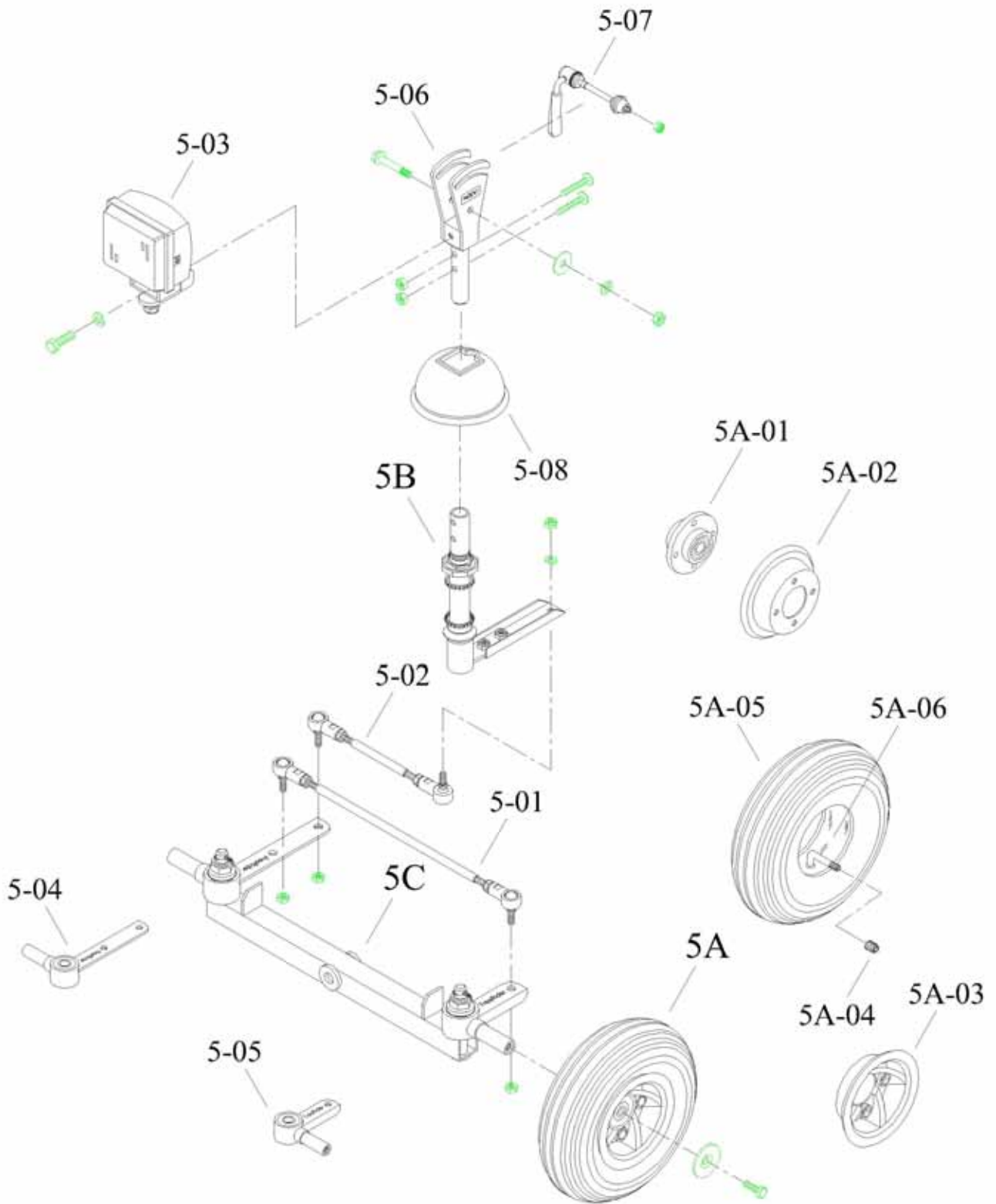
REAR CHASSIS ASSEMBLY-DRIVE SYSTEM



REAR CHASSIS ASSEMBLY-DRIVE SYSTEM

DRAWING NO.	PART NO.	PART NAME			
4A	AB07-0501	REAR CHASSIS ASSY.			
4B	AC11-0602-D51	TRANS AXLE ASSY.			
4B-A	PA05-A121-D51	MOTOR ASSY.			
4B-B	PA11-A300	TRANS AXLE ASSY			
4C	AC13-0500-GI	REAR WHEEL ASSY.			
4C-01	PM12-0302	INNER RIM (STEEL) 10"			
4C-02	PM12-0401	OUTER RIM (AL., BLACK) 10"			
4C-03	PM13-0104	D19 HUB (REAR)			
4C-04	PP92-0001	VALVE CAP			
4C-05	PP92-0301-GI	(3.00-4) TYRE			
4C-06	PP93-0300-I	(3.00-4) TUBE			
4D	PA06-A701	SEAT POST ASSY.			
4-01	PA07-A600	M8 U TYPE SCREW ASSY.			
4-02	PA07-A700	U TYPE BRACKET ASSY.			
4-03	PM11-0110	MAGNETIC BRAKE			
4-04	PKE2-0403	CIRCUIT BREAKER 35AMP			
4-05	PM11-0401	MOTOR CARBON BRUSH			
4-06	PP06-0102	TUBBER COVER REAR FLAT			
4-07	PP06-0202	SEAT POST REAR FLAT			
4-08	PP07-0102	ANTI-TIP WHEEL SMALL			
4-09	PP11-0202	MOTOR CARBON BRUSH CAP			
4-10	PP90-0401	SEAT POST REAR FLAT			
4-11	PV00-0702-1	7/16×8×48L BOLT			
4-12	PV06-0801	RELEASE TIGHTEN KNOB			

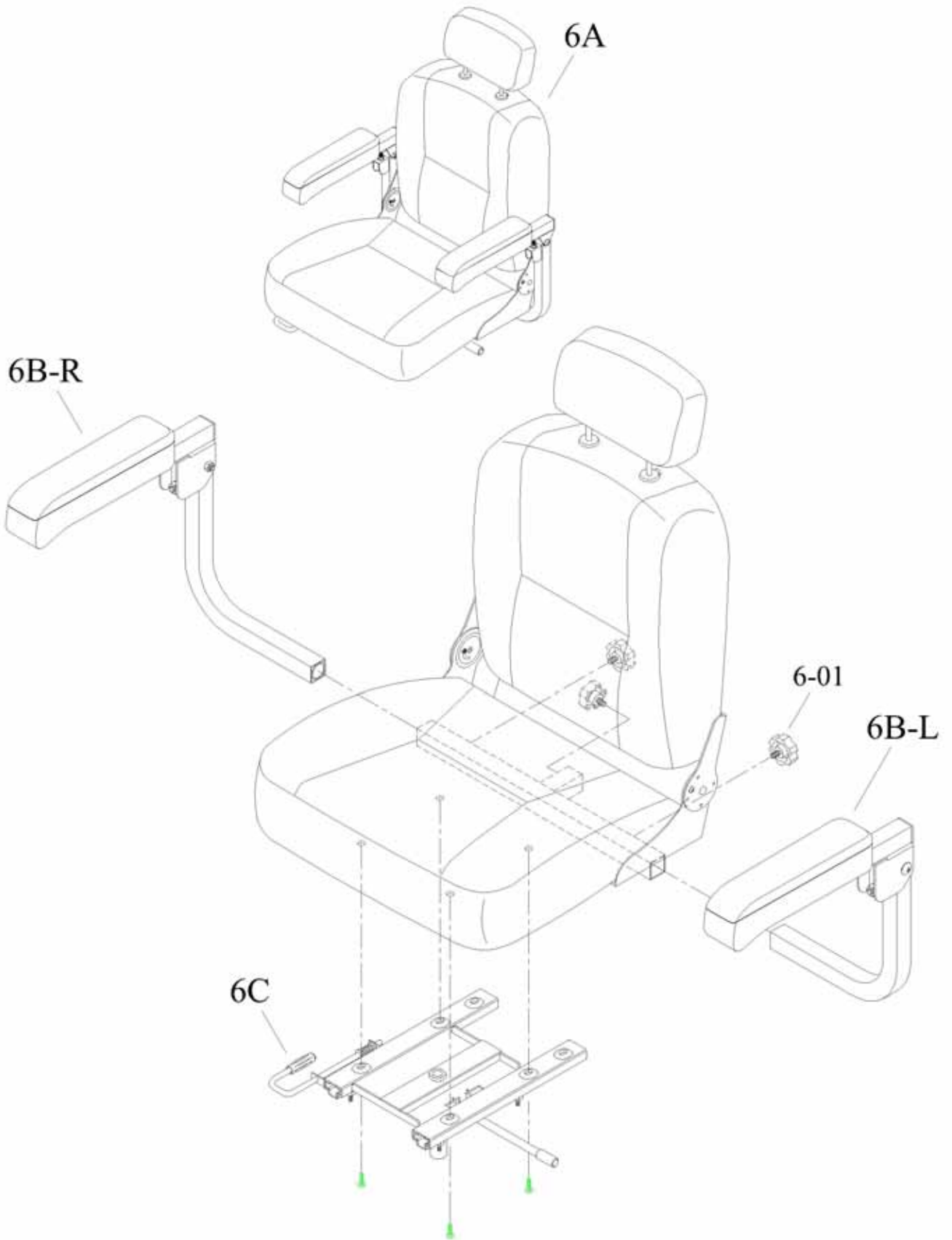
STEERING



STEERING

DRAWING NO.	PART NO.	PART NAME			
5A	AC12-0500-GI	FRONT WHEEL ASSY.			
5A-01	PA12-A100	HUB ASSY. (FRONT)			
5A-02	PM12-0302	INNER RIM (STEEL) 10"			
5A-03	PM12-0401	OUTER RIM (AL., BLACK) 10"			
5A-04	PP92-0001	VALVE CAP			
5A-05	PP92-0300-GI	(3.00-4 IA-2802) TYRE			
5A-06	PP93-0300-I	(3.00-4) TUBE			
5B	AC08-0105	STEERING SHAFT ASSY.			
5C	PA00-A900	FRONT AXLE ASSY.			
5-01	PA09-A200-H	CONNECTING ROD LONG ASSY.			
5-02	PA09-A213-H	CONNECTING ROD SHORT ASSY.			
5-03	PA06-A102	HEAD LIGHT ASSY			
5-04	PA09-A600	FRONT WHEEL AXLE, RH ASSY.			
5-05	PA09-A601	FRONT WHEEL AXLE, LH ASSY.			
5-06	PA10-A100	HANDLE BAR JOINTBASE ASSY.			
5-07	PA10-A200	TIGHTEN HANDLE ASSY.			
5-08	PP10-0101	RUBBER COVER FRONT			

SEAT ASSEMBLY



CONSOLE AND WIRING SYSTEM

